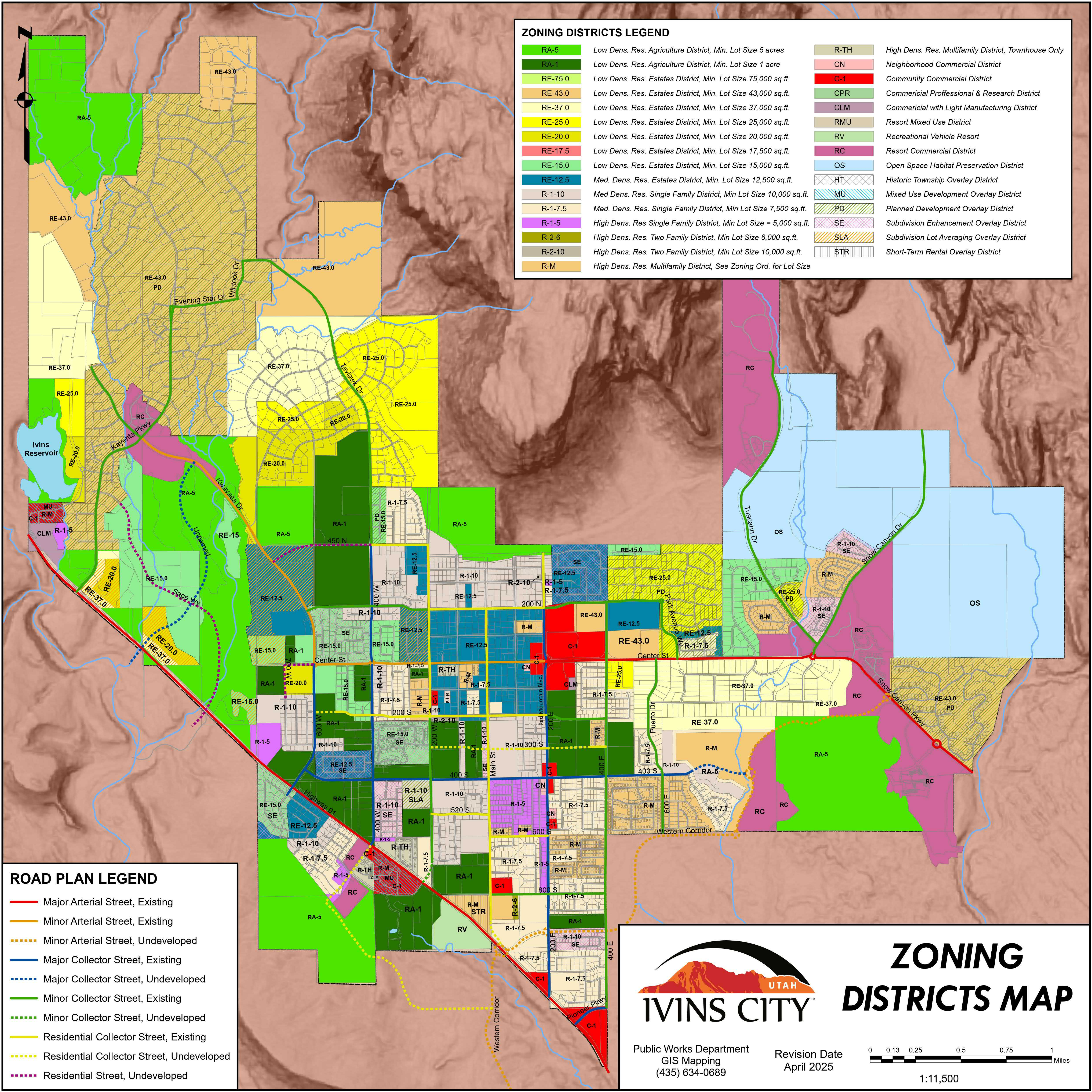


ZONING DISTRICTS LEGEND			
RA-5	Low Dens. Res. Agriculture District, Min. Lot Size 5 acres	R-TH	High Dens. Res. Multifamily District, Townhouse Only
RA-1	Low Dens. Res. Agriculture District, Min. Lot Size 1 acre	CN	Neighborhood Commercial District
RE-75.0	Low Dens. Res. Estates District, Min. Lot Size 75,000 sq.ft.	C-1	Community Commercial District
RE-43.0	Low Dens. Res. Estates District, Min. Lot Size 43,000 sq.ft.	CPR	Commercial Professional & Research District
RE-37.0	Low Dens. Res. Estates District, Min. Lot Size 37,000 sq.ft.	CLM	Commercial with Light Manufacturing District
RE-25.0	Low Dens. Res. Estates District, Min. Lot Size 25,000 sq.ft.	RMU	Resort Mixed Use District
RE-20.0	Low Dens. Res. Estates District, Min. Lot Size 20,000 sq.ft.	RV	Recreational Vehicle Resort
RE-17.5	Low Dens. Res. Estates District, Min. Lot Size 17,500 sq.ft.	RC	Resort Commercial District
RE-15.0	Low Dens. Res. Estates District, Min. Lot Size 15,000 sq.ft.	OS	Open Space Habitat Preservation District
RE-12.5	Med. Dens. Res. Estates District, Min. Lot Size 12,500 sq.ft.	HT	Historic Township Overlay District
R-1-10	Med Dens. Res. Single Family District, Min Lot Size 10,000 sq.ft.	MU	Mixed Use Development Overlay District
R-1-7.5	Med. Dens. Res. Single Family District, Min Lot Size 7,500 sq.ft.	PD	Planned Development Overlay District
R-1-5	High Dens. Res Single Family District, Min Lot Size = 5,000 sq.ft.	SE	Subdivision Enhancement Overlay District
R-2-6	High Dens. Res. Two Family District, Min Lot Size 6,000 sq.ft.	SLA	Subdivision Lot Averaging Overlay District
R-2-10	High Dens. Res. Two Family District, Min Lot Size 10,000 sq.ft.	STR	Short-Term Rental Overlay District
R-M	High Dens. Res. Multifamily District, See Zoning Ord. for Lot Size		

ROAD PLAN LEGEND	
	Major Arterial Street, Existing
	Minor Arterial Street, Existing
	Minor Arterial Street, Undeveloped
	Major Collector Street, Existing
	Major Collector Street, Undeveloped
	Minor Collector Street, Existing
	Minor Collector Street, Undeveloped
	Residential Collector Street, Existing
	Residential Collector Street, Undeveloped
	Residential Street, Undeveloped



ZONING DISTRICTS MAP

Public Works Department
GIS Mapping
(435) 634-0689

Revision Date
April 2025



1:11,500