

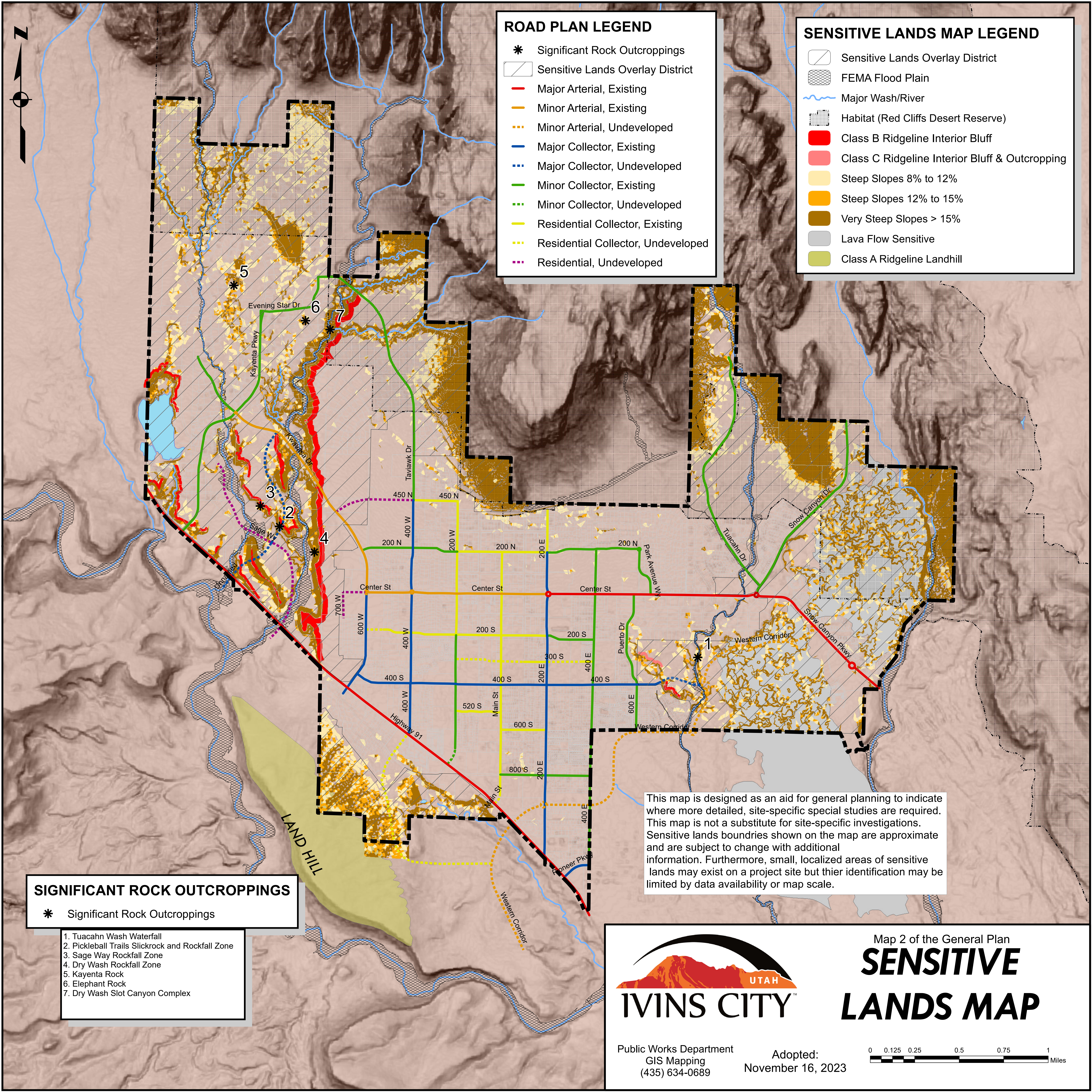


ROAD PLAN LEGEND

- * Significant Rock Outcroppings
- ▨ Sensitive Lands Overlay District
- Major Arterial, Existing
- Minor Arterial, Existing
- ⋯ Minor Arterial, Undeveloped
- Major Collector, Existing
- ⋯ Major Collector, Undeveloped
- Minor Collector, Existing
- ⋯ Minor Collector, Undeveloped
- Residential Collector, Existing
- ⋯ Residential Collector, Undeveloped
- ⋯ Residential, Undeveloped

SENSITIVE LANDS MAP LEGEND

- ▨ Sensitive Lands Overlay District
- ▨ FEMA Flood Plain
- Major Wash/River
- ▨ Habitat (Red Cliffs Desert Reserve)
- Class B Ridgeline Interior Bluff
- Class C Ridgeline Interior Bluff & Outcropping
- Steep Slopes 8% to 12%
- Steep Slopes 12% to 15%
- Very Steep Slopes > 15%
- Lava Flow Sensitive
- Class A Ridgeline Landhill



SIGNIFICANT ROCK OUTCROPPINGS

- * Significant Rock Outcroppings

1. Tuacahn Wash Waterfall
2. Pickleball Trails Slickrock and Rockfall Zone
3. Sage Way Rockfall Zone
4. Dry Wash Rockfall Zone
5. Kayenta Rock
6. Elephant Rock
7. Dry Wash Slot Canyon Complex

This map is designed as an aid for general planning to indicate where more detailed, site-specific special studies are required. This map is not a substitute for site-specific investigations. Sensitive lands boundaries shown on the map are approximate and are subject to change with additional information. Furthermore, small, localized areas of sensitive lands may exist on a project site but their identification may be limited by data availability or map scale.



Map 2 of the General Plan
SENSITIVE LANDS MAP

Public Works Department
 GIS Mapping
 (435) 634-0689

Adopted:
 November 16, 2023

